

T-Mobile

1755 CREEKSIDE OAKS DR. SUITE 190
SACRAMENTO, CA 95833

CROWN
CASTLE

200 SPECTRUM CENTER DRIVE,
SUITE 1700 & 1800
IRVINE, CA 92618

TEL
CYTE

INFRASTRUCTURE SERVICES

3450 N HIGLEY RD - SUITE 102,
MESA, AZ 85215

T-MOBILE SITE NUMBER:
LA64151A

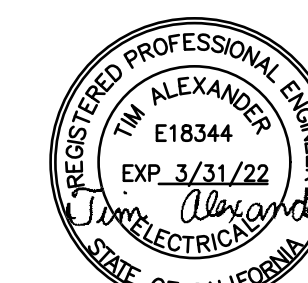
BU #: 823179
CLAYTON - HALLADAY ST

2929 HALLADAY ST
SANTA ANA, CA 92705

EXISTING 53'-0" MONOPINE

ISSUED FOR:

REV	DATE	DRWN	DESCRIPTION	DES./QA
A	03/01/19	CM	PRELIMINARY	LMR
0	07/29/20	AK	SUBMITTAL	CW
1	08/21/20	AK	CLIENT COMMENTS	CW
2	08/27/20	AK	CLIENT COMMENTS	CW



SIGNED, 27 AUG 2020

IT IS A VIOLATION OF LAW FOR ANY PERSON,
UNLESS THEY ARE ACTING UNDER THE DIRECTION
OF A LICENSED PROFESSIONAL ENGINEER,
TO ALTER THIS DOCUMENT.

SHEET NUMBER:

C-2.1

REVISION:

2

STRUCTURE W/ APPURTENANCE
ELEV. = 58'-0"

HEIGHT OF STRUCTURE
ELEV. = 53'-0"

(E) T-MOBILE EQUIPMENT:
(6) ANTENNAS
(3) RRUs
MOUNTED TO EXISTING MOUNTS

(E) T-MOBILE EQUIPMENT TO BE REMOVED
(3) ANTENNAS
(3) RRUs
MOUNTED TO EXISTING MOUNTS

TOP EXISTING T-MOBILE ANTENNAS
ELEV. = 52'-6"

EXISTING T-MOBILE MCL/ACL
ELEV. = 50'-0"

EXISTING T-MOBILE MCL
ELEV. = 48'-6"

MOUNT ANALYSIS NOTES:

1. THE DESIGN DEPICTED IN THESE DRAWINGS IS VALID WHEN ACCOMPANIED BY A CORRESPONDING PASSING MOUNT ANALYSIS.
2. CONSTRUCTION MANAGER / GENERAL CONTRACTOR SHALL REVIEW THE MOUNT ANALYSIS FOR ANY CONDITIONS PRIOR TO INSTALLATION.
3. ANY REQUIRED MOUNT MODIFICATION DESIGN OR MOUNT REPLACEMENT SHALL BE APPROVED BY EOR.

INSTALLER NOTE:

PAINT NEW EQUIPMENT TO MATCH
EXISTING. DNSTALL ANTENNA SOCKS

(E) 53'-0" MONOPINE
(E) T-MOBILE FEEDLINES:
(1) 9X18 HCS
(3) 6X12 HCS
(12) 7/8" COAX CABLE

(E) BOLLARDS
(TOTAL 2)

(E) BOLLARDS
(TYP)

1 EXISTING SOUTH ELEVATION
SCALE: NOT TO SCALE

STRUCTURE W/ APPURTENANCE
ELEV. = 58'-0"

HEIGHT OF STRUCTURE
ELEV. = 53'-0"

(E) T-MOBILE EQUIPMENT:
(6) ANTENNAS
(3) RRUs
MOUNTED TO EXISTING MOUNTS

(N) T-MOBILE EQUIPMENT
(3) ANTENNAS
(3) RRUs
MOUNTED TO EXISTING MOUNTS

TOP EXISTING T-MOBILE ANTENNAS
ELEV. = 52'-6"

EXISTING T-MOBILE MCL/ACL
ELEV. = 50'-0"

EXISTING T-MOBILE MCL
ELEV. = 48'-6"

(E) 53'-0" MONOPINE
(E) T-MOBILE FEEDLINES:
(1) 9X18 HCS
(3) 6X12 HCS
(12) 7/8" COAX CABLE
(N) T-MOBILE FEEDLINES:
(1) 6X12 HCS

(N) BOLLARDS
(TOTAL 4)

(N) T-MOBILE
CONCRETE PAD
(7'-0" X 4'-0")

(E) BOLLARDS
(TYP)

2 NEW SOUTH ELEVATION
SCALE: NOT TO SCALE

T-MOBILE SITE NUMBER:
LA64151A

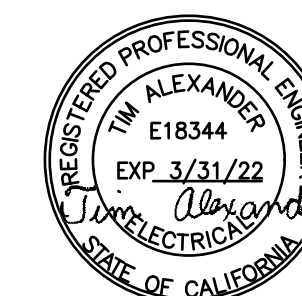
BU #: 823179
CLAYTON - HALLADAY ST

2929 HALLADAY ST
SANTA ANA, CA 92705

EXISTING 53'-0" MONOPINE

ISSUED FOR:

REV	DATE	DRWN	DESCRIPTION	DES./QA
A	03/01/19	CM	PRELIMINARY	LMR
0	07/29/20	AK	SUBMITTAL	CW
1	08/21/20	AK	CLIENT COMMENTS	CW
2	08/27/20	AK	CLIENT COMMENTS	CW



SIGNED, 27 AUG 2020

IT IS A VIOLATION OF LAW FOR ANY PERSON,
UNLESS THEY ARE ACTING UNDER THE DIRECTION
OF A LICENSED PROFESSIONAL ENGINEER,
TO ALTER THIS DOCUMENT.

SHEET NUMBER:

C-2.2

REVISION:

2

STRUCTURE W/ APPURTENANCE
ELEV. = 58'-0"

HEIGHT OF STRUCTURE
ELEV. = 53'-0"

(E) T-MOBILE EQUIPMENT:
(6) ANTENNAS
(3) RRUs
MOUNTED TO EXISTING MOUNTS

(E) T-MOBILE EQUIPMENT TO BE REMOVED
(3) ANTENNAS
(3) RRUs
MOUNTED TO EXISTING MOUNTS

TOP EXISTING T-MOBILE ANTENNAS
ELEV. = 52'-6"

EXISTING T-MOBILE MCL/ACL
ELEV. = 50'-0"

EXISTING T-MOBILE MCL
ELEV. = 48'-6"

MOUNT ANALYSIS NOTES:

1. THE DESIGN DEPICTED IN THESE DRAWINGS IS VALID WHEN ACCOMPANIED BY A CORRESPONDING PASSING MOUNT ANALYSIS.
2. CONSTRUCTION MANAGER / GENERAL CONTRACTOR SHALL REVIEW THE MOUNT ANALYSIS FOR ANY CONDITIONS PRIOR TO INSTALLATION.
3. ANY REQUIRED MOUNT MODIFICATION DESIGN OR MOUNT REPLACEMENT SHALL BE APPROVED BY EOR.

INSTALLER NOTE:

PAINT NEW EQUIPMENT TO MATCH EXISTING. INSTALL ANTENNA SOCKS

STRUCTURE W/ APPURTENANCE
ELEV. = 58'-0"

HEIGHT OF STRUCTURE
ELEV. = 53'-0"

(E) T-MOBILE EQUIPMENT:
(6) ANTENNAS
(3) RRUs
MOUNTED TO EXISTING MOUNTS

(N) T-MOBILE EQUIPMENT
(3) ANTENNAS
(3) RRUs
MOUNTED TO EXISTING MOUNTS

TOP EXISTING T-MOBILE ANTENNAS
ELEV. = 52'-6"

EXISTING T-MOBILE MCL/ACL
ELEV. = 50'-0"

EXISTING T-MOBILE MCL
ELEV. = 48'-6"

(E) 53'-0" MONOPINE

(E) T-MOBILE FEEDLINES:
(1) 9X18 HCS
(3) 6X12 HCS
(12) 7/8" COAX CABLE

(N) T-MOBILE FEEDLINES:
(1) 6X12 HCS

(N) BOLLARDS
(TOTAL 4)

(N) T-MOBILE
CONCRETE PAD
(7'-0" X 4'-0")

(E) BOLLARDS (TYP)

1 EXISTING WEST ELEVATION
SCALE: NOT TO SCALE

2 NEW WEST ELEVATION
SCALE: NOT TO SCALE

T-MOBILE SITE NUMBER:
LA64151A

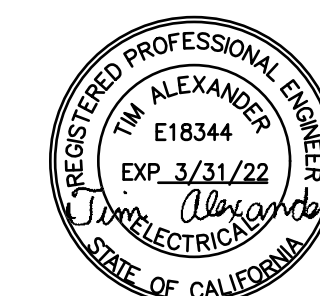
BU #: 823179
CLAYTON - HALLADAY ST

2929 HALLADAY ST
SANTA ANA, CA 92705

EXISTING 53'-0" MONOPINE

ISSUED FOR:

REV	DATE	DRWN	DESCRIPTION	DES./QA
A	03/01/19	CM	PRELIMINARY	LMR
0	07/29/20	AK	SUBMITTAL	CW
1	08/21/20	AK	CLIENT COMMENTS	CW
2	08/27/20	AK	CLIENT COMMENTS	CW



SIGNED, 27 AUG 2020

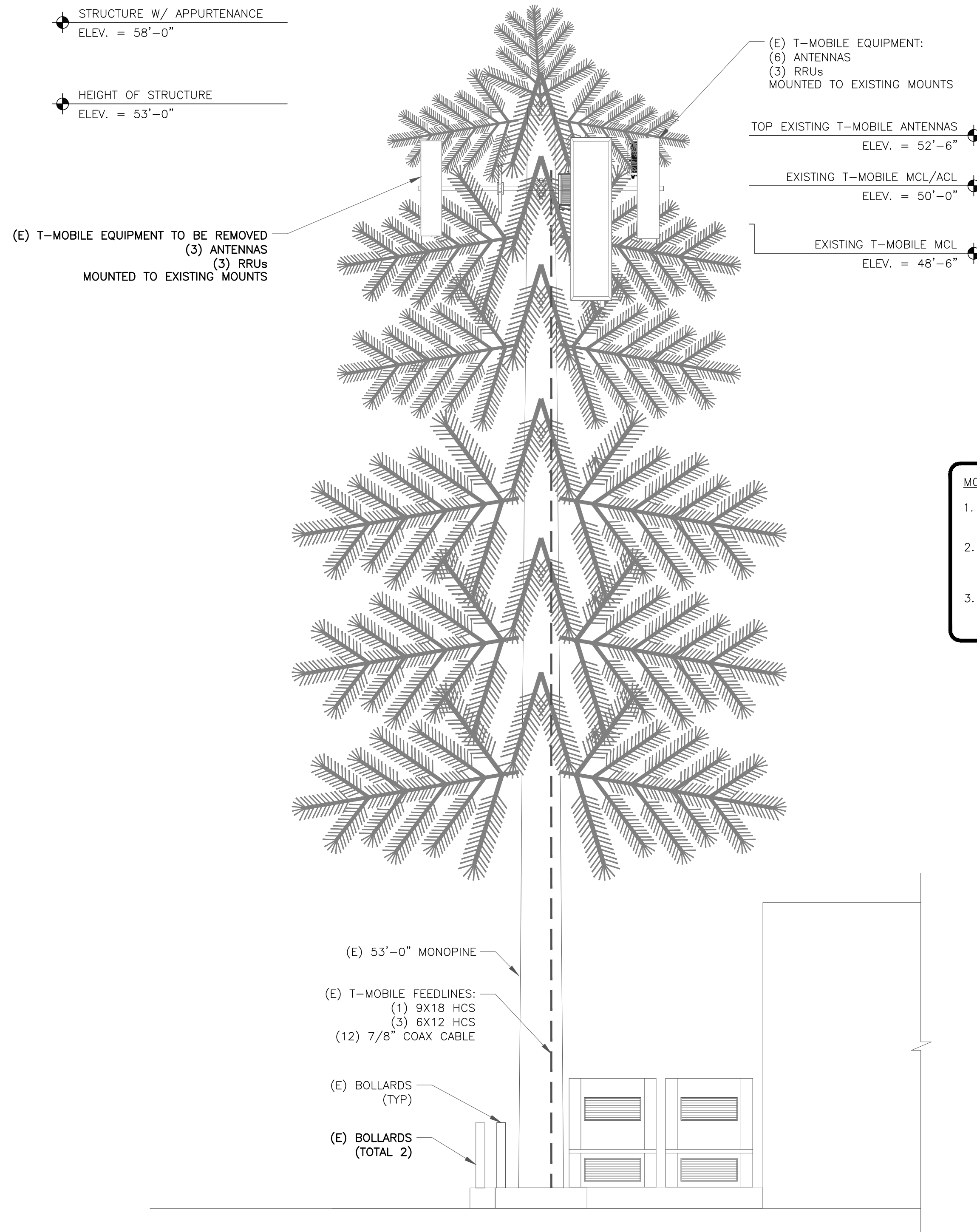
IT IS A VIOLATION OF LAW FOR ANY PERSON,
UNLESS THEY ARE ACTING UNDER THE DIRECTION
OF A LICENSED PROFESSIONAL ENGINEER,
TO ALTER THIS DOCUMENT.

SHEET NUMBER:

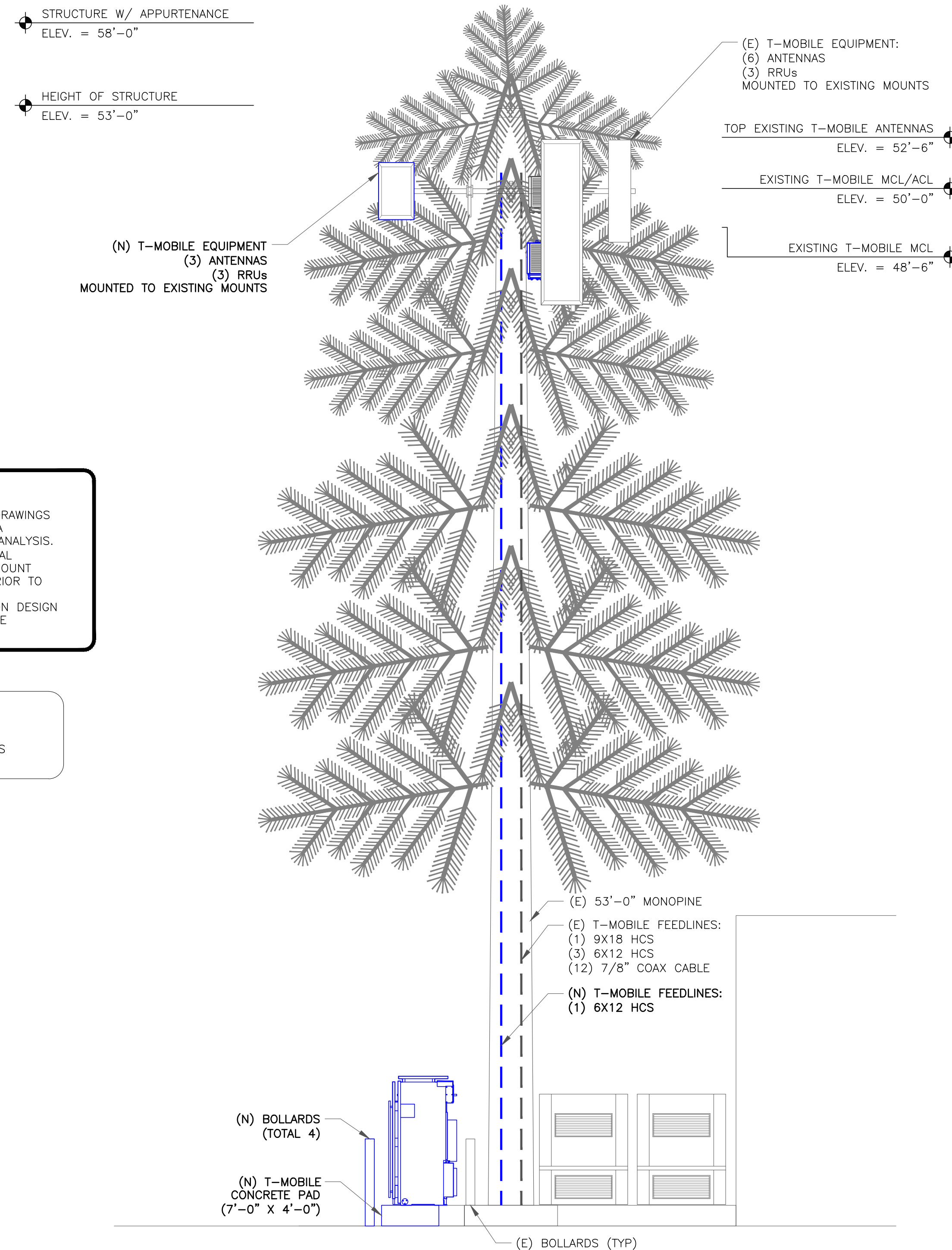
C-2.3

REVISION:

2



1 EXISTING EAST ELEVATION
SCALE: NOT TO SCALE



2 NEW EAST ELEVATION
SCALE: NOT TO SCALE

MOUNT ANALYSIS NOTES:

1. THE DESIGN DEPICTED IN THESE DRAWINGS IS VALID WHEN ACCOMPANIED BY A CORRESPONDING PASSING MOUNT ANALYSIS.
2. CONSTRUCTION MANAGER / GENERAL CONTRACTOR SHALL REVIEW THE MOUNT ANALYSIS FOR ANY CONDITIONS PRIOR TO INSTALLATION.
3. ANY REQUIRED MOUNT MODIFICATION DESIGN OR MOUNT REPLACEMENT SHALL BE APPROVED BY EOR.

INSTALLER NOTE:

PAINT NEW EQUIPMENT TO MATCH
EXISTING. BNSTALL ANTENNA SOCKS